

Parish Profile – Appendix – Manse Details

The manse for Blackhall St Columba's Church is in Blinkbonny Crescent, in a row of Edwardian terraced houses which are about five minutes' walk from the church. It has 3 public rooms on the ground floor and 4 bedrooms plus a study on the first floor.



Blinkbonny Crescent is a quiet cul-de-sac which sits above and away from the main Queensferry Road, within easy walking distance of shops and Blackhall Primary School. It is also close to Craigleith Retail Park.

The manse is in the catchment area for Blackhall Primary School and for Royal High School, a well-respected co-educational state secondary school. There are also independent schools nearby (Erskine Stewarts Melville for boys and girls and St George's School for girls).

The house has a small garden to the front and a large, south-facing garden to the rear. All of the rooms within the house have been redecorated recently.

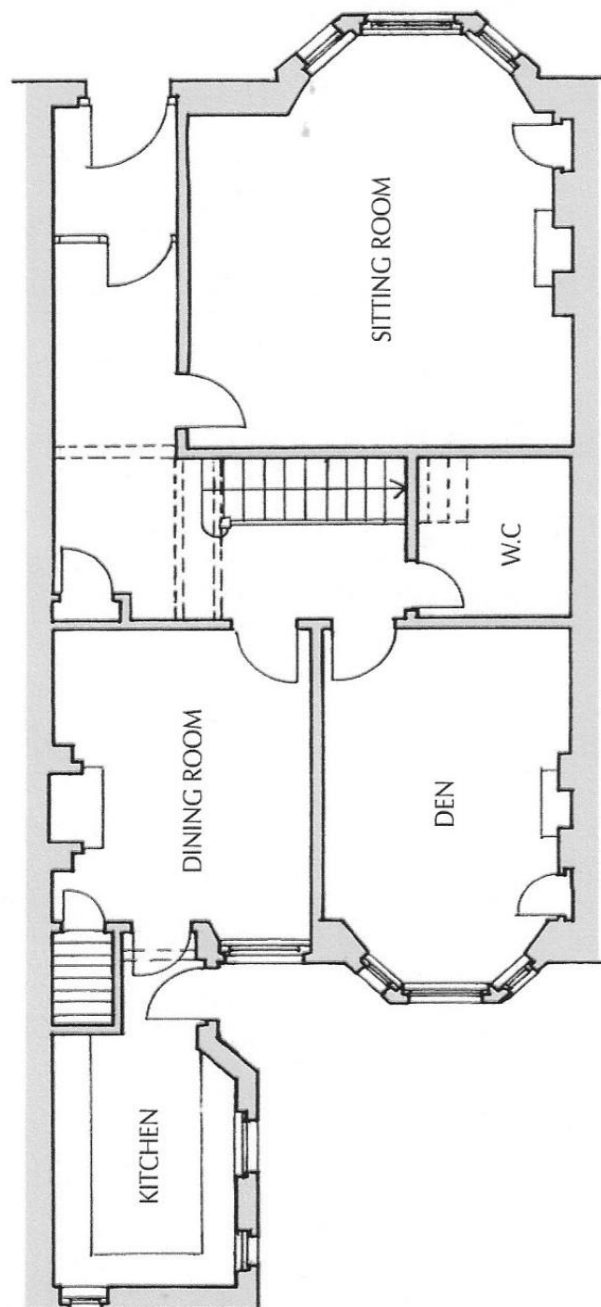


As well as free on-street parking at the front of the manse, a single garage forms part of the property, accessible by a private lane which runs behind Blinkbonny Crescent.

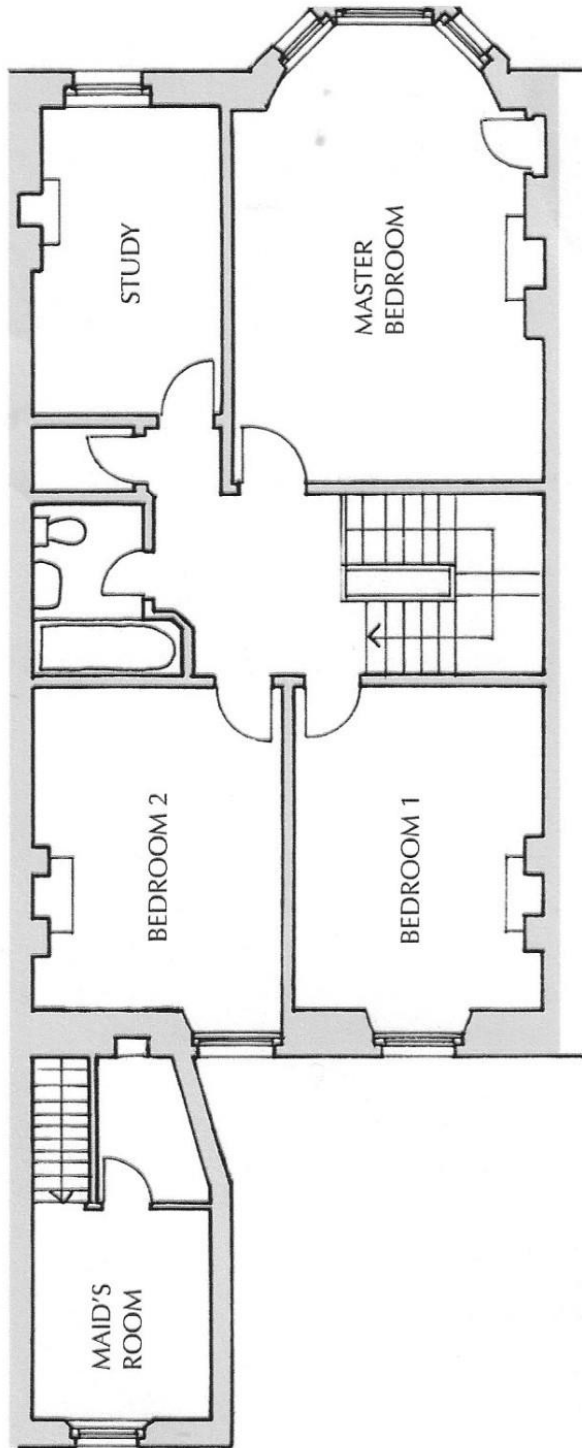
The floorplan shows the generous room sizes and accommodation. Please note that there is a family bathroom on the first floor and a WC on the ground floor.

Gas-fired central heating and hot water operates throughout the house.

MANSE AT 5 BLINKBONNY CRESCENT - SKETCH - GROUND FLOOR PLAN



MANSE AT 5 BLINKBONNY CRESCENT - SKETCH FIRST FLOOR PLAN





The Sitting Room at the front of the house.



The hallway and original staircase offer a warm welcome to the house.